



Nanohana – MIS Newsletter

Edition 406 – March 1, 2024

From Mr. Trent Citrano, Head of School



Wow! What an incredibly fun-filled, busy February it was! With loads of trips (including the Grade 6 Snow Trip that Mr. Hall will tell you about on page 2), assemblies, high-quality learning, and events - we even had a visit from an oni and day with snow that the children enjoyed so much.

One of the main events was Science Week which culminated in some creative and engaging Science Fair Projects. It was apparent that the students had really taken their experiments seriously and explored them thoroughly. The top scientists from each of the classes were presented with an award and a scientific prize at an elementary assembly. Please find them celebrated in the photo below. Congratulations to all of the students for their hard work! A special thank you to Mr. Bersalona and the Science Curriculum Team for their support.

All of the faculty and staff want to thank the parents for the amazing Staff Appreciation Luncheon last week. This year's theme was 'MIS would be a circus without you!' and the decorations and photo booth filled our hearts with love and laughter. The quality, variety and amount of donated food was remarkable! Nobody left hungry for sure. Please know that we truly feel appreciated and we appreciate all of the support that you as parents give us and our students each and every day. On Monday, I held a special assembly also appreciating our teachers.

We look forward to welcoming all of the parents in next week for our Parents' Evenings. We couldn't do this without you. We look forward to celebrating your child(ren)'s successes with you.

Congratulations to our Science Fair Winners!



Upcoming Events

Friday 01 March

Year-End Awards Ceremony
Reports Home

Monday 04 March

Transfer Day
2024-2025 Class Lists Home

Tuesday 05 March

PTA Gen Memb Mtg - 12:15pm
Parents' Evening

Wednesday 06 March

Parents' Evening

Thursday 07 March

Parents' Evening

Monday 11 March

G1&2 Swimming

Tuesday 12 March

Board Meetings

Friday 15 March

Last Day of Year
K3 & G6 Graduations

Tuesday 02 April

First Day of Term 1
Opening Ceremonies
Elementary - 9:30am
Kindergarten - 10:40am

Makuhari International School
3-2-9 Wakaba,
Mihama-ku
Chiba City
Chiba 261-0014

Tel: 043-296-0277
Fax: 043-296-0186
Email: info@mis.ed.jp
www.mis.ed.jp



*Innovative Bilingual
Education for an
Ever-Changing World*



From Mr. Anthony Hall, Deputy Head of School



Greetings from MIS. This week I would like to celebrate the fantastic spirit displayed by our Grade 6 students during the recent residential trip to the Rising Sun Hotel in Kurohime.

The Grade 6 Snow Trip took us into the frozen wonderland of Nagano Prefecture and we were treated to plenty of snow. We started the trip with a snow ball fight, sledding and high jinks in the snow on the training slopes. In the evenings, the students enjoyed hearty family-style meals and time to relax and have fun together. With Mr Irish as the chief entertainer, on the first night he was ably supported by his host MC, G6G's Len Hoffman. The party games, karaoke, movie night and toast-ed marshmallows by the campfire were enjoyed by all.

Each morning we ate filling breakfasts and headed out to the ski slopes. Students were grouped by experience and ability giving them an opportunity to connect with different students than they typically might. This led to some new-found friendships and lots of supportive talk amongst the students who quickly made progress with either their skiing or snowboarding. On the final day, we took out the sleds and hit the slopes once more. It was snowing that day, in stark contrast to the two previous days, but that didn't stop the G6 students from having a great time as they skidded and slid down the slopes for the final time.

The teaching team were impressed by the students because they all made the most of the activities, truly giving their all every step of the way. The Rising Sun hotel staff noted that our students were polite, responsible and very tidy. The students' ever-present smiles told the whole story. They really enjoyed themselves throughout the trip. The memories that our 6th Graders made together will last a lifetime. What a great group of children!



HOUSE POINT

TOTALS
SARI BACK
INTO FIRST
PLACE!



Lost & Found

Please make sure you check the school's Lost & Found in the office before Mar 15th as after that items will be donated or disposed of.



Makuhari International School
3-2-9 Wakaba,
Mihama-ku
Chiba City
Chiba 261-0014

Tel: 043-296-0277
Fax: 043-296-0186
Email: info@mis.ed.jp
www.mis.ed.jp



Kindergarten News



K1:
Exploring
Different
Types of
Weather in
Language
Time!



K2:
Experimenting
with Static
Electricity
During
Science
Week!



K3:
Making
Patterns in
Maths
And
Enjoying a
Rare Day
with Snow!



Makuhari International School
3-2-9 Wakaba,
Mihama-ku
Chiba City
Chiba 261-0014

Tel: 043-296-0277
Fax: 043-296-0186
Email: info@mis.ed.jp
www.mis.ed.jp



Grade 1 Explore Texture in Nature!

In Art, Grade 1 have been exploring texture and the natural world. They have done various studies of different natural objects and their textures. Such as bringing in a piece of fruit and sketching the exterior and interior. This has culminated in the students choosing a natural object and creating a textured artwork using fabric.



Grade 2 Frolic in the Snow!

The Grade 2 students were thrilled by a rare snowfall, happily building snowmen and tossing snowballs. We had a lot of fun in the snow during morning break time!



Makuhari International School
3-2-9 Wakaba,
Mihama-ku
Chiba City
Chiba 261-0014

Tel: 043-296-0277
Fax: 043-296-0186
Email: info@mis.ed.jp
www.mis.ed.jp



Grade 3 Grow Their Family Trees!

For Social Studies, Grade 3 have been looking and learning about things from the past. They spent some time representing their family trees and describing members of their families to their classmates. They were able to learn so much about each other and how families are connected.



Grade 4 Get Fit and Find their Balance!

In G4 the students have been learning about the bones and muscles of the human body in Science and balancing in PE. They are currently investigating the effects of regular exercise on the muscles to see if people who do more exercise have stronger muscles. They used their knowledge of points and patches to create a balance which they could all do in order to find out if people who exercise more often can hold that balance for a longer time. Next, they will use a scatter diagram to present the data and draw their conclusions.



Makuhari International School
3-2-9 Wakaba,
Mihama-ku
Chiba City
Chiba 261-0014

Tel: 043-296-0277
Fax: 043-296-0186
Email: info@mis.ed.jp
www.mis.ed.jp





NANO HANA

Grade 5 Explore Sea Creatures

Students in Grade 5 enjoyed a visit to the aquarium as part of their previous studies on growth and living things. It was a successful visit with many notes, observations and sketches made of the different sea creatures. Some of our favourites included the giant tuna tank, the hammerhead sharks, the friendly puffins and the interactive zone, where we were able to touch some shy hermit crabs and spiky sea urchins.



Grade 6 Create Their Dream 3D Parks with Recycled Materials

Grade 6 students have been working hard to acquire new skills in art. They have been using a variety of techniques and materials to create a realistic 3D sculpture. Their goal is to design and create a children's park that they would like to see built. Students have been using recycled wood, straws, string, copper wire and other materials.



Makuhari International School
3-2-9 Wakaba,
Mihama-ku
Chiba City
Chiba 261-0014

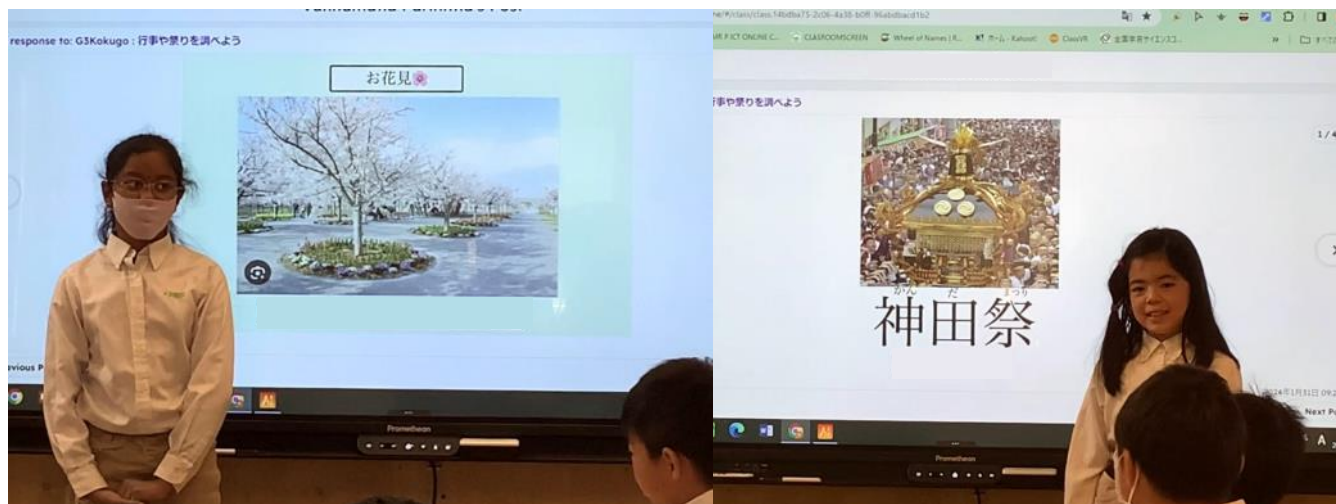
Tel: 043-296-0277
Fax: 043-296-0186
Email: info@mis.ed.jp
www.mis.ed.jp





Grade 3 Learn & Present About Different Cultural Festivals & Events!

During their Kokugo lessons recently, the students in Grade 3 researched their chosen festivals and events using books and the online research. They summarized the information they had gathered and wrote a script with narrative words and quizzes, keeping the audience in mind. The content ranged from traditional Japanese events such as New Year's and Tanabata to foreign festivals that were new to the students. They learned many new things from each other's presentations!



Recognizing Student Success!



Makuhari International School
3-2-9 Wakaba,
Mihama-ku
Chiba City
Chiba 261-0014

Tel: 043-296-0277
Fax: 043-296-0186
Email: info@mis.ed.jp
www.mis.ed.jp



Super Assemblies and Students of the Week!



Makuhari International School
3-2-9 Wakaba,
Mihama-ku
Chiba City
Chiba 261-0014

Tel: 043-296-0277
Fax: 043-296-0186
Email: info@mis.ed.jp
www.mis.ed.jp



More Amazing Assemblies!



Makuhari International School
3-2-9 Wakaba,
Mihama-ku
Chiba City
Chiba 261-0014

Tel: 043-296-0277
Fax: 043-296-0186
Email: info@mis.ed.jp
www.mis.ed.jp



Kindergarten Scared Away the Oni on Setsubun!

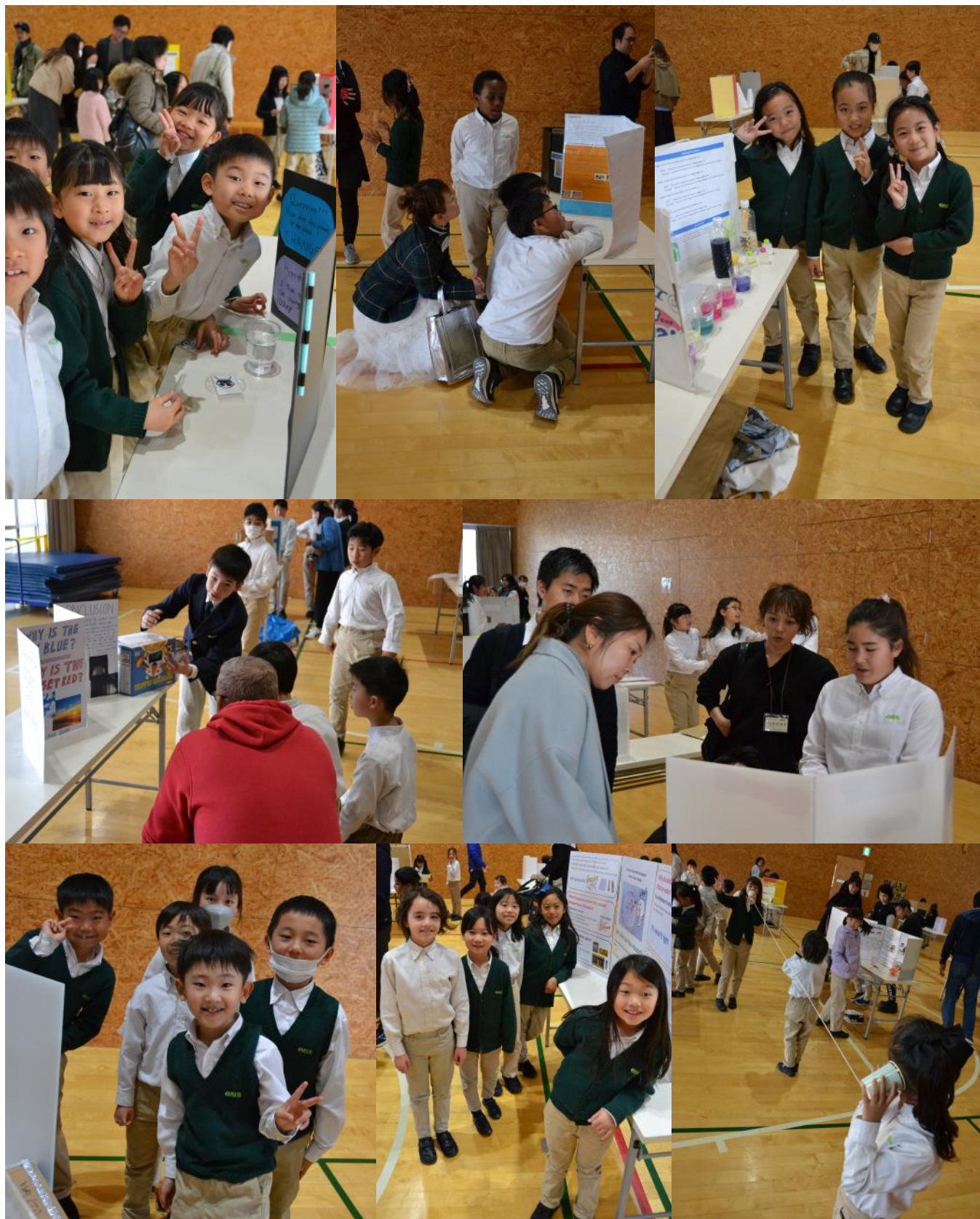


Makuhari International School
3-2-9 Wakaba,
Mihama-ku
Chiba City
Chiba 261-0014

Tel: 043-296-0277
Fax: 043-296-0186
Email: info@mis.ed.jp
www.mis.ed.jp



Super Science Fair Projects!

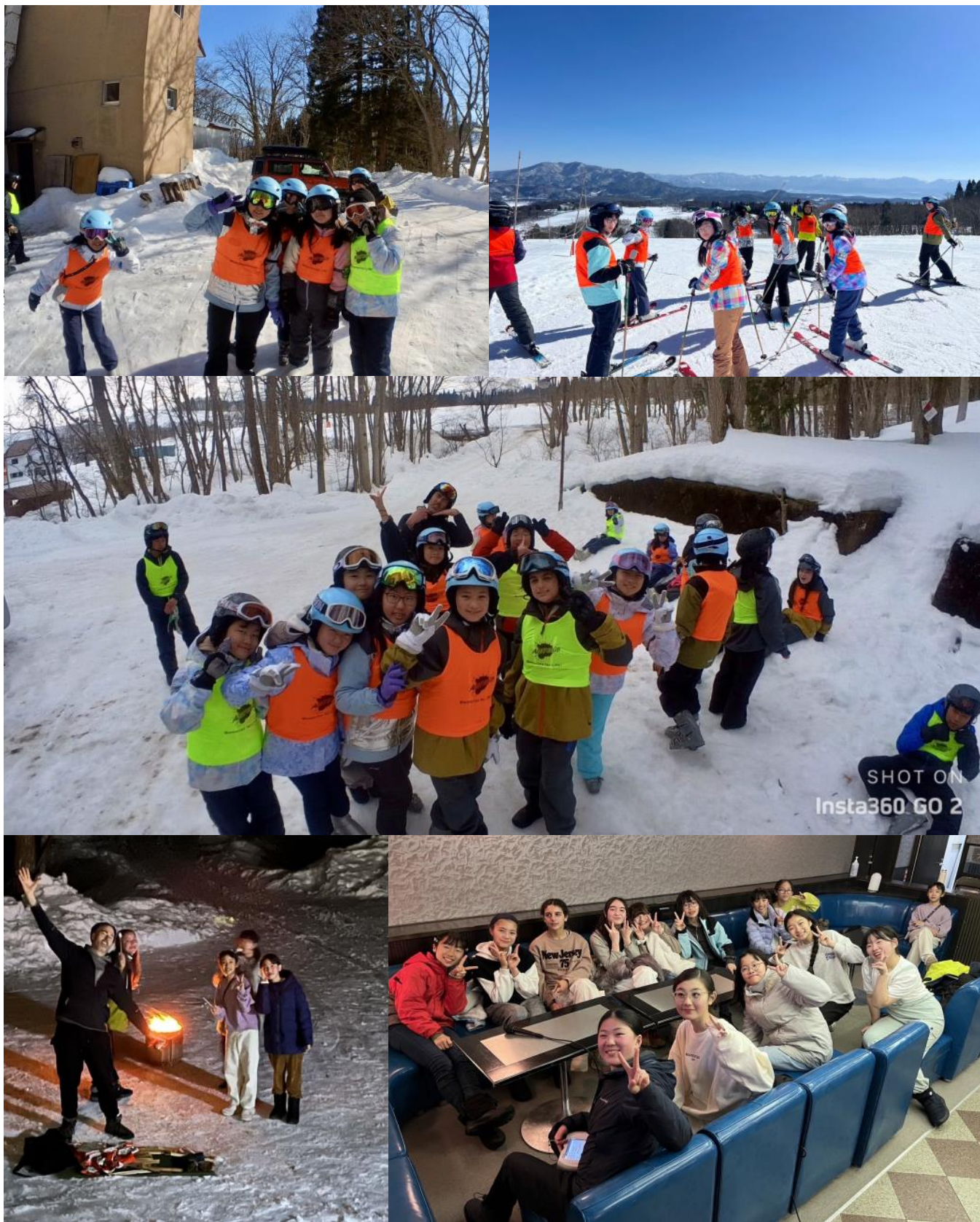


Makuhari International School
3-2-9 Wakaba,
Mihama-ku
Chiba City
Chiba 261-0014

Tel: 043-296-0277
Fax: 043-296-0186
Email: info@mis.ed.jp
www.mis.ed.jp



Fun-Filled Grade 6 Snow Trip!



Makuhari International School
3-2-9 Wakaba,
Mihama-ku
Chiba City
Chiba 261-0014

Tel: 043-296-0277
Fax: 043-296-0186
Email: info@mis.ed.jp
www.mis.ed.jp



NANO HANA

Thank You, MIS Faculty & Staff!



Makuhari International School
3-2-9 Wakaba,
Mihama-ku
Chiba City
Chiba 261-0014

Tel: 043-296-0277
Fax: 043-296-0186
Email: info@mis.ed.jp
www.mis.ed.jp

CIS WE ARE AN ACCREDITED SCHOOL
EARCOS
East Asia Regional Council of Schools